



***Our Vision:***

*To develop aspirational learners who strive for excellence academically, creatively and culturally, benefitting from a wide range of opportunities led by inspirational educators.*

# **TUTOR GROUP SLIDES**

## **WEEK 19 – W/B 19.02.24**



Compassionate

Respectful

Creative

Relentless

Aspirational

Resilient

# **CONTENTS PAGE**

Each week, all tutors must go through the starred sections. The others are there as reminders or if expectations needs to be reinforced.

[General Reminders](#)

[High Expectations](#)

[Support & Guidance](#)

[Rewards & Sanctions](#)

[Resources & Information for Helping with Your Learning](#)

\* [What's On This Week & Coming Up...](#)

\* [Extra-Curricular Clubs & Activities @ SHS](#)

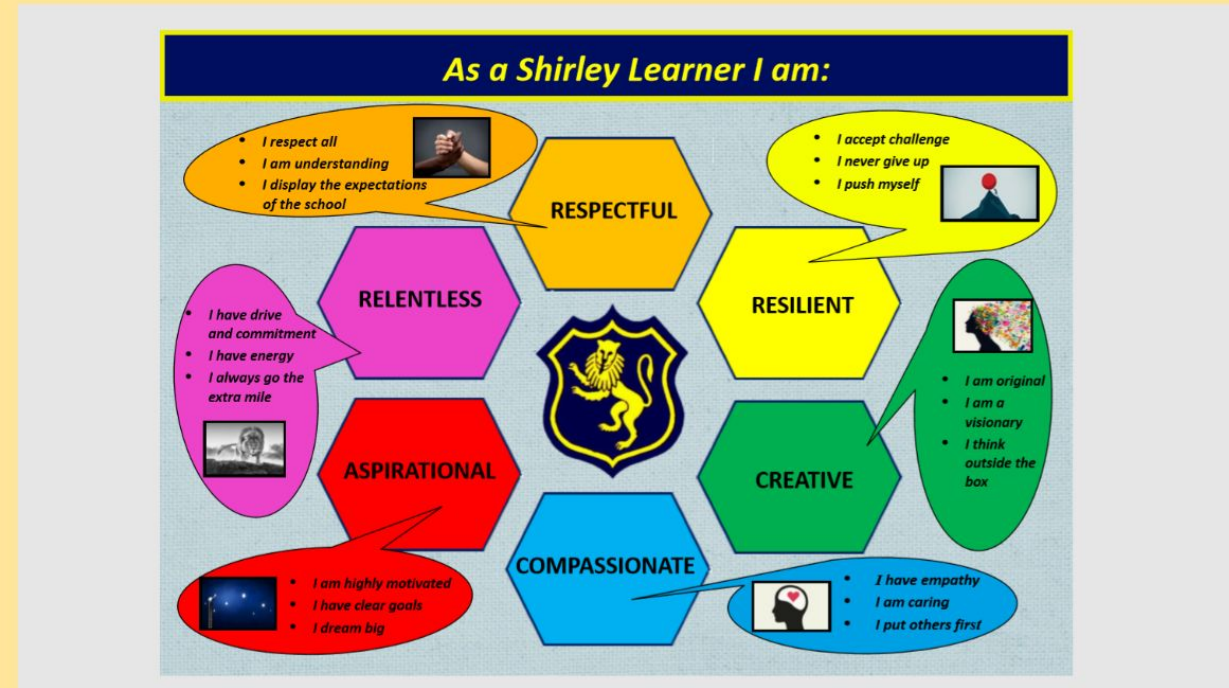


# What do we stand for at Shirley High School?

Motto	Striving for Excellence
Vision	To develop aspirational learners who strive for excellence academically, creatively and culturally, benefitting from a wide range of opportunities led by inspirational educators
Mission	Shirley High School's mission is to offer a high quality education to all learners within an inclusive and respectful environment; an environment where all are consistently challenged and supported to be successful, well rounded global citizens
Values	<div><div>Compassionate</div><div>Respectful</div><div>Creative</div><div>Relentless</div><div>Aspirational</div><div>Resilient</div></div> & ABC
Golden Rule	Shirley High School students are expected to show consideration and respect to all members of the school and local community at all times.



The Expectation	FOR LEARNERS	FOR TEACHERS	The Expectation	FOR LEARNERS	FOR TEACHERS
High Expectations	Attitude meets expectations of teacher	Clear seating plan	Input	Arrive at the lesson ready to learn	Well-paced lesson differentiated to meet the needs of all learners and cover content and skills
	Active participation in the lesson	Promotion of high expectations	Retrieval	Can retrieve learning from previous topics	Opportunities for retrieval practice embedded
	Consistent self-challenge	All learners stretched and challenged		Complete all retrieval practice activities	Opportunities for retrieval gauge learning from / last lesson / last week / last month / last term / last year
Learning and Progress	Understand how learning links together	Clear sequence of learning which demonstrates progression	Connections	Make connections between topics and subjects	Include and promote language for life and opportunities for wider reading in order to enhance cultural capital
	Response to marking demonstrates progress	Marking and feedback clearly evidence progress		Use subject specific vocabulary across the curriculum	Include and promote maths across the curriculum (wherever possible)
	All set tasks are completed by the deadline provided	Tasks and opportunities promote a high level of student productivity		Connect learning to potential future careers	Promote career opportunities (where appropriate)
Input	On task and well behaved	Use of higher-order thinking questions	Consolidating Progress	Articulate what has been learnt and how it links to prior learning	Use of plenaries
	Excellent presentation of work	Encourage student-led learning and independence		Demonstrate knowledge in all forms of assessment	Continuous assessment of learning
	Engaged in learning and making contributions	Monitor and reinforce high expectations of presentation		Prepare for future learning with teacher guidance	Challenge students to prepare for future learning through independent tasks
	Demonstrate respect towards peers and teacher	Relevant subject knowledge and well planned lesson evident			



**REMEMBER ..... #weareshirley**



- THIS IS WHAT WE ARE:**
- One of the most improved schools in Croydon;
  - A school which is focused on giving you the best educational experience possible;
  - A school that cares about your well-being and personal development.
- THIS IS WHAT WE NEED YOU TO DO:**
- Live the Shirley Values as well as following the Golden Rule
  - Be a Shirley Learner





## SLT Structure and Roles - 2023/4



Principal  
Mr Myton

Deputy  
Principal  
Mrs Afriye

Deputy  
Principal  
Ms Francis

Assistant  
Principal  
Mr Cotton

Assistant  
Principal  
Mr Hurst

Assistant  
Principal  
Mr Nicholson

Assistant  
Principal  
Mrs Brown

Associate Assistant  
Principal  
Ms Thomas

Associate Assistant  
Principal  
Ms Crammer

Associate Assistant  
Principal  
Mr Jegede

Compassionate

Respectful

Creative

Aspirational

Resilient

## SHIRLEY HIGH SCHOOL HOUSE SYSTEM

### CREATORS



Famous Historical Figure  
Winifred Atwell  
Performing Arts



Endangered Species  
Polar Bear

MR KING

### DIRECTORS



Famous Historical Figure  
Rosalind Franklin  
Scientist



Endangered Species  
Tiger

Mr Dyer

### EDITORS



Famous Historical Figure.  
Sir Isaac Newton  
Mathematician



Endangered Species  
Rhino

Mr Reid

### PRODUCERS



Famous Historical Figure  
William Shakespeare  
Playwright



Endangered Species  
Orangutan

MR VERNON

## PASTORAL STRUCTURE 2023 - 2024

Deputy Principal - Pastoral & safeguarding

Ms M Francis

Assistant Principal - Behaviour

Mr C Nicholson

Head of Year 7

Ms S Boothe

Head of Year 8

| Mr Jegede

Head of Year 9

Miss M Hayden

Head of Year 10

Miss H Bird

Head of Year 11

Ms S Frimpong-Toogood

Head of Year 12 & 13

Mr T Lewis

Assistant Head of Years (AHOYS):

Year 7 & Year 6 (transition)

Mrs S Dye

Year 8

Mr C Reid

Year 9

Mr M Powell

Year 10 & 11

Mr M Vernon

Year 12 & 13

Ms C Samms

Director of  
English, Media  
and Ethics  
Miss Mallie

Director of Maths  
and Enterprise  
Mr Kiabi

Director Science  
and Technology  
Mr Inett

Director of EBacc  
Mrs Thomas

Director of Sport  
and Vocation  
Ms Murawski

Director of  
Performing and  
Creative Arts  
Mr Taylor

Director of  
Inclusion &  
Student Support  
Miss Pepperrell

Compassionate

Respectful

Creative

Relentless

Resilient



# GENERAL REMINDERS

Compassionate

Respectful

Creative

Relentless

Aspirational

Resilient

# LUNCHTIME LINE UP

YEAR	ARRANGEMENTS
7	Line up outside the canteen door in Russell Square heading towards the D block and use the till on the Main Hall side
8	Line up outside the canteen door in Russell Square by the hand washing basin and use the till on the Russell Square side
9	Line up outside the canteen door in Russell Square at 12:55 (after the Yr8s)
10 & 11	Line up by the playing field door by the lockers and enter the Main Hall via the door opposite Canteen 2; use the Main Hall till
12 & 13	Come down to the canteen at 12.30pm

## Student Morning Arrival Reminder

Students are permitted on site from 7.30am but must either be in a supervised extra-curricular club or in the canteen for Breakfast Club.

If not undertaking either of these activities, students are not permitted inside the school buildings but must remain on the front playground until 8.15am.

## OUTDOOR SERVERY AT LUNCHTIMES



The queuing arrangements in place now:

**Wk A = KS4 & 5 can queue from 12.40 - 12.55pm  
KS3 from 12.55pm**

**Wk B = KS3 can queue from 12.40 - 12.55pm  
KS4 & 5 from 12.55pm**

## Wet Weather Arrangements



Please remind students of the following arrangements when we have wet weather:

- Year 7 & 8 Canteen 1 and/or Canopies in Russell Square and Front Playground
- Year 9 Sports Hall and Canteen 2
- Year 10 & 11 Main hall



These arrangements are for before school, break and lunch as required. Staff will be informed when these arrangements are to be put in place and will then let students know.

No student is permitted on site before 7.30am



# TIMES OF THE SCHOOL DAY

LESSON	TIMES
AM REG / FORM TIME / ASSEMBLY	8.30 – 9.00
1	9.00 – 9.50
2	9.50 – 10.40
BREAK	10.40 – 11.00
3	11.00 – 11.50
4	11.50 – 12.40
LUNCH	12.40 – 1.25
5	1.25 – 2.15
6	2.15 – 3.05
PM REG (KS3 ONLY)	3.05 – 3.20

# ASSEMBLY DAYS

YEAR GROUP	DAY
7	TUESDAY
8	THURSDAY
9	FRIDAY
10	WEDNESDAY
11	MONDAY
12 & 13	TUESDAY

Compassionate

Respectful

Creative

Relentless

Aspirational

Resilient

# HIGH EXPECTATIONS

Compassionate

Respectful

Creative

Relentless

Aspirational

Resilient



## Think Green

Compassionate

Respectful

Relentless

- We are a school that cares about our planet and the footprint we leave on it;
- Please use water bottles that can be reused;
- Please recycle everything you can;
- Please keep the school environment clean and litter free;
- We have recycle bins in every classroom, remember to recycle paper and plastics.



## LITTER

**DROPPING LITTER IN OUR SCHOOL OR IN THE LOCAL COMMUNITY IS UNACCEPTABLE**

**ALL LITTER SHOULD BE PLACED IN THE MANY BINS PROVIDED AROUND THE SCHOOL**

**Any student seen or found dropping litter will be sanctioned.**

## WE ALL WANT A SAFE SCHOOL ENVIRONMENT



- Wash your hands regularly.
- Sanitise your hands regularly.
- Use a tissue if you need to sneeze and then dispose of it properly.
- Do not spit.
- Do not chew gum or litter used gum around the school.
- Get fresh air as much as possible and keep inside areas well ventilated.
- Practise good hygiene in and around school ie wash hands after going to the toilet, keep the toilet facilities clean, do not eat in toilets, ensure only used sanitary items are placed in the sanitary bins.

## SCHOOL PROPERTY & ENVIRONMENT

We are disappointed with the minority of pupils who choose to graffiti and vandalise school property. This behaviour is unacceptable and effects everyone in our community.



This is your school and it is hard to understand why pupils would choose to treat it in this way or why you would not want a clean school with an attractive environment and nice facilities?

Anyone found behaving in this antisocial way will receive a serious sanction and be asked to pay fully for any damage.  
CCTV will now be used routinely to identify the culprits.



**YOU HAVE BEEN WARNED!**

**RESPECT OUR SCHOOL & BEHAVE IN LINE WITH EXPECTATIONS**



# SHS GOLDEN RULE

SEEK RESPECT,  
NOT  
ATTENTION. IT  
LASTS  
LONGER.

A good head and good heart are  
always a formidable combination. But  
when you add to that a literate  
tongue or pen, then you have  
something very special.

- Nelson Mandela

PlanBee



Shirley High School students are expected to show  
consideration and respect to all members of the school  
and local community at all times.

GOOD  
MANNERS  
COST  
NOTHING

## COURTESY / GOOD MANNERS

- Please only stand when a member of SLT enters your classroom if they greet the class e.g., 'Good morning Year 7s'. If no greeting please remain seated and continue working.
- Please respond to staff as follows 'Yes Miss/Sir' or 'Good morning Sir/Miss' or 'Good afternoon Miss/Sir' when your name is called for the register.
- Please follow staff instructions immediately and without comment or argument – at all times.



"GOOD MANNERS  
are just a way  
of showing  
other people  
that we have  
RESPECT for them"

Compassionate

Respectful

Creative

Relentless

Aspirational

Resilient

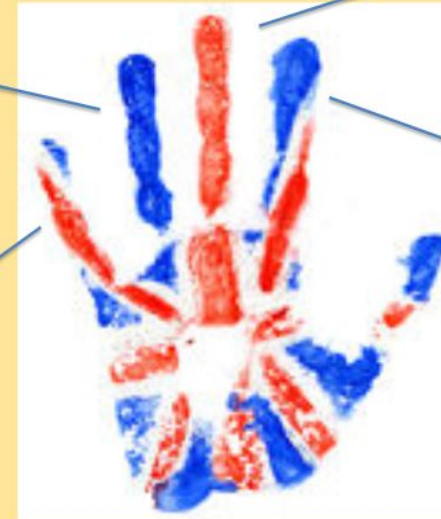
## BRITISH VALUES AT SHIRLEY HIGH SCHOOL

### RULE OF THE LAW

*We respect the rules of  
the school and laws of  
society*

### DEMOCRACY

*We all have a say*



### TOLERANCE

*We are a proudly diverse  
community and are respectful and  
compassionate towards one  
another*

### RESPECT

*We show respect to all within  
our school and local  
community*

### INDIVIDUAL LIBERTY

*We know our human rights  
and exercise these in school  
life and beyond*

## EXPECTATIONS

### Attendance & Punctuality:

- Attend school regularly – 96%
- Arrive at school on time – no more than 3% lates

### Behaviour:

- Behave well in lessons so all can learn
- Behave well around the school so all can be safe
- Behave well on the way to and on the way from school so we maintain good relationships with the local community

### Commitment:

- Be fully organised
- Work to the best of your ability in lessons
- Engage with lessons – participate, concentrate, contribute



Compassionate

Respectful

Creative

Relentless

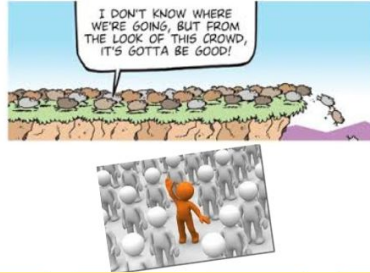
Aspirational

Resilient



# MAINTAINING HIGH STANDARDS

Sometimes I have to REMIND myself that I don't have to do what EVERYONE ELSE is doing.



It's easy to stand with the crowd. It takes **Courage** to stand alone.



It doesn't matter what others are doing, it matters what you are doing.

## DAILY EQUIPMENT FOR SCHOOL

- Reading Book
- Full bottle of water
- Pencil case containing .....
  - 2 x black, 2 x red, 2 x green pens
  - 2 x lead pencils, 1 x pack colouring pencils
  - 1 x sharpener, 1 x eraser, 1 x ruler
  - 1 x glue stick, 1 x **paper** scissors
- 1 x Maths set



It's *your* uniform: wear it with *pride*!

YEAR 7 – 11

## UNIFORM EXPECTATIONS

Reminders have been given regularly - there is now no excuse not to know the uniform expectations. If a student is found breaking the rules then they will be sanctioned and incorrect items of uniform confiscated.

- No piercings (not even if they are covered) except one small pair of stud earrings
- No false eyelashes
- No different colour socks to tights
- No coats on inside the school building
- No hats and / or hoods up on site
- All students are to wear blazers at all times

THE 'EVERYONE ELSE IS ....' EXCUSE IS NOT ACCEPTABLE! JUST DO THE RIGHT THING!

SHS PE Kit – is compulsory for all students and must be worn in all lessons. You can purchase the kit from [www.swischoolwear.co.uk](http://www.swischoolwear.co.uk). (Note - you will need to be aware of your house colour when placing an order)

- SHS Polo Shirt – Compulsory
- SHS PE Shorts- Compulsory
- SHS Rugby Top – Compulsory
- SHS Football Socks – Compulsory
- Football Boots (studded) – Compulsory
- Shin Pads – Compulsory
- Gum Shield – Strongly advise
- SHS Tracksuit Bottoms - optional
- SHS Half-Zip Fleece - optional



# **SUPPORT & GUIDANCE**

**Compassionate**

**Respectful**

**Creative**

**Relentless**

**Aspirational**

**Resilient**



Sexual harassment is just boys being boys not worth reporting no big deal never acceptable.

## SHIRLEY HIGH SCHOOL DOES NOT TOLERATE GENDER BASED, RACIST OR HOMOPHOBIC COMMENTS, LANGUAGE OR BULLYING



Homophobic, Biphobic or Transphobic language is **NEVER** acceptable and will not be tolerated in this school.

There is never a situation where you should use HBT language.

All reports of HBT bullying will be dealt with immediately.

Don't be afraid to tell teachers if you hear any of this language being used.

Sexual Harassment: Not In our School!

We do not tolerate hatred, bullying, racist, misogynistic or homophobic comments.

Silence **END** SEXUAL HARASSMENT

## SHIRLEY HIGH SCHOOL WILL NOT TOLERATE ANY MEMBER OF OUR COMMUNITY BEING SUBJECTED TO SEXUAL HARASSMENT OR SEXUAL HARM

**CALL IT OUT ..... REPORT IT .... ALWAYS! PROTECT YOURSELF & PROTECT OTHERS**



**THINK**  
WHEN IS 'BANTER' ACTUALLY BULLYING?

## SHS HAS ZERO TOLERANCE AGAINST BULLYING!

### Remember ...

If someone says or does something unintentionally hurtful and they do it once, that's UNTHINKING & DISAPPOINTING.

If someone says or does something intentionally hurtful and they do it once, that's MEAN & NASTY.

If someone says or does something intentionally hurtful and they keep doing it over a period of time even when you have asked them to stop or show them you are upset, that's BULLYING.

**STOP BULLYING**

**BULLYING MUST NOT BE TOLERATED, BULLIES MUST BE STOPPED SO IT DOESN'T CONTINUE FOR ANYONE. REPORT, REPORT, REPORT!!**

**STOP BULLYING**  
SEE IT - SAY IT - STOP IT

## Student Pastoral Support

THE SHIRLEY HIGH SCHOOL STAFF ARE HERE FOR YOU – ALL YOU HAVE TO DO IS ASK .....



- Form Tutor
- Head of Year
- Assistant Head of Year / Mentoring Team
- Sixth Form Support Team
- Attendance and Welfare Officer
- Mental Health First Aiders
- Assistant Principal - Behaviour
- Deputy Principal - Pastoral/DSL



## REPORTING BULLYING!



**PLEASE REPORT ALL INSTANCES OF BULLYING IF BULLYING IS NOT REPORTED IT WILL CONTINUE**

- YOU CAN REPORT ANONYMOUSLY VIA THE CONFIDE BUTTON ON YOUR COMPUTER HOME SCREEN.
- YOU CAN REPORT DIRECTLY TO YOUR FORM TUTOR, HEAD OF YEAR, TRUSTED MEMBER OF STAFF OR PREFECT.
- ALL REPORTS WILL BE TAKEN SERIOUSLY AND WE WILL ALWAYS WORK WITH YOU TO RESOLVE THE SITUATION.

**BULLYING MUST NOT BE TOLERATED, BULLIES MUST BE STOPPED SO IT DOESN'T CONTINUE FOR ANYONE. REPORT, REPORT, REPORT!!**





# SHS COUNSELLING

Need to talk?



- Students undergoing counselling will receive their session times via the register tray the day before.
- They are to show the note to their teacher, leave their lesson without fuss, and make their way directly to their counselling room.
- At the end of the session the counsellor will escort them back to their lesson.
- Drop In sessions are available - see notices on counselling room doors

If you are struggling with your mental health, there is support for you:

## SAFEGUARDING TEAM @ SHS 2022-23

TBC - SAFEGUARDING GOVERNOR	LINK GOVERNOR FOR SAFEGUARDING PROVISION AT SHS
MS FRANCIS - DEPUTY PRINCIPAL DESIGNATED SAFEGUARDING LEAD	WHOLE SCHOOL RESPONSIBILITY FOR SAFEGUARDING & TRAINING
MR POWERS - ASSOCIATE ASSISTANT PRINCIPAL DEPUTY DESIGNATED SAFEGUARDING LEAD	DEPUTISE FOR DSL WHEN ABSENT
MR RAYNER - ASSOCIATE ASSISTANT PRINCIPAL DEPUTY DESIGNATED SAFEGUARDING LEAD	YEAR 8 & 9 REFERRALS & ACTION
MR COTTON - ASSISTANT PRINCIPAL DEPUTY DESIGNATED SAFEGUARDING LEAD	YEAR 7 REFERRALS & ACTION
MS STEWART - ATTENDANCE & WELFARE OFFICER DEPUTY DESIGNATED SAFEGUARDING LEAD	YEAR 12 & 13 REFERRALS & ACTION
TBC - SOCIAL WORKER IN SCHOOL (SWIS)	YEAR 7 - 13 EARLY HELP ASSESSMENTS
	YEAR 7 - 13 TAP MEETINGS
	CP ADVICE & ASSESSMENT OF REFERRALS
	NAMED SOCIAL WORKER FOR SCHOOL, CP / CIN CASES

ANY CONCERNS REPORT TO A DSL IMMEDIATELY

### Inside of school

### Outside of school



**Off the Record (Croydon)**- Young people can self-refer for text based or in person counselling. The organisation also offers advice to young people about common difficulties they might face.



**Kooth**- An online mental health community where young people can connect with others across the country to discuss their concerns, tips



SHS COUNSELLING

Need to talk?  
COUNSELLING



- Students can self refer or be referred by their HoY.
- Students undergoing counselling will receive their session times via the register tray the day before.
- They are to show the note to their teacher, leave their lesson without fuss, and make their way directly to their counselling room.
- At the end of the session the counsellor will escort them back to lesson.
- Drop In session times will be announced soon.



**YOUNG MINDS**  
fighting for young people's mental health

**Young Minds** - Mental Health support articles aimed at students.

## MEET the MENTAL HEALTH FIRSTAIDERS



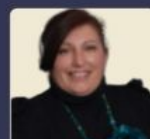
**Mr Cotton (MC)**  
Senior Mental Health Lead & Assistant Principal



**Miss Sharp-Higgins (JSH)**  
Lead of PD/ Science Teacher



**Mr Inett (EI)**  
Director of Faculty, Science



**Ms Buckler (LB)**  
Reception

Look Out for the Green Lanyard!



**Mr Vernon (MV)**  
AHOY Yr 10 & 11

Come see us at our MH Drop-Ins every day in the Wellbeing Room (next to G02)



**Ms Lindsay (TL)**  
Headteacher's PA



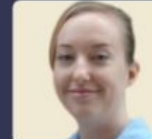
**Ms Dusha (JD)**  
Art Teacher



**Ms Deguin (RD)**  
Student Support Assisant



**Ms O'Rourke (EOR)**  
EAL & SEN



**Ms Snow (JS)**  
French Teacher - on Maternity leave

## MHFA DROP IN SCHEDULE (G02)

Week A				
Lunch & after school	Break & lunch	Lunch & after school	Break & lunch	Lunch & after school
Mon	Tues	Weds	Thurs	Fri
EOR	JD	JSH	MC	EI
MV	RDG	RDG	TL	LB
Week B				
Lunch & after school	Break & lunch	Lunch & after school	Break & lunch	Lunch & after school
Mon	Tues	Weds	Thurs	Fri
EI	MC	EOR	JD	JSH
LB	TL	MV		



## SAFETY & SECURITY OF OUR SCHOOL SITE & OUR COMMUNITY

### What we have done:

- Only staff are permitted to enter the school site before 7.30 and they do so by inputting codes into the security gates
- The side gate is no longer open in the mornings after 8.25am
- From 7.30am a member of staff is on the pedestrian gate to ensure only members of our school community and verified visitors enter the school
- From 8.00am the car park top gate is closed meaning access can only be via knowledge of the security code or being let in by Reception.
- From 8.30am a member of SLT is on the pedestrian gate to record late students and ensure only members of our school community and verified visitors enter the school
- At 8.55am the pedestrian front gate and pedestrian playground gate are closed meaning access can only be via knowledge of the security code or being let in by Reception.
- All SHS staff wear SHS lanyards. All visitors sign in at Reception and are given a red lanyard, a visitor label and school safeguarding info
- Students are educated on the importance of safeguarding, have safeguarding information in their planners and are reminded at assemblies.

## SAFETY & SECURITY OF OUR SCHOOL SITE & OUR COMMUNITY

### What students need to do:

- Understand that safeguarding is the protection of all members of our school community - everyone should feel safe and protected.
- Ensure they are aware of the importance of safeguarding in our community through reading the information in the planner, engaging in PD lessons where safeguarding topics are discussed and paying attention to the information given in assemblies.
- Know which members of staff are in the school safeguarding team.
- **REPORT ALL INCIDENTS WHERE SAFEGUARDING IS COMPROMISED**
- **REPORT ALL INCIDENTS WHERE YOU FEEL UNSAFE**

**WE CANNOT DEAL WITH WHAT WE DON'T KNOW!**






- Challenge any unknown person you come across on our site if they are not wearing a lanyard and report this immediately to a member of SHS staff

**YOU HAVE BEEN TAUGHT FROM AN EARLY AGE NOT TO TRUST STRANGERS!**

**THIS DOESN'T CHANGE IN THE SCHOOL ENVIRONMENT!**

- **NEVER EVER EVER OPEN ANY OF THE PEDESTRIAN GATES FOR VISITORS!**

## SAFEGUARDING TEAM @ SHS 2023-24

	MR WEST - VICE CHAIR OF GOVERNORS SAFEGUARDING GOVERNOR	LINK GOVERNOR FOR SAFEGUARDING OVERVIEW OF SAFEGUARDING PROVISION AT SHS
	MS FRANCIS - DEPUTY PRINCIPAL DESIGNATED SAFEGUARDING LEAD	WHOLE SCHOOL RESPONSIBILITY FOR SAFEGUARDING & TRAINING KEY STAGE 4 - REFERRALS & ACTION
	MR NICHOLSON - ASSISTANT PRINCIPAL DEPUTY DESIGNATED SAFEGUARDING LEAD	DEPUTISE FOR DSL IN THEIR ABSENCE KEY STAGE 3 - REFERRALS & ACTION
	MR COTTON - ASSISTANT PRINCIPAL DEPUTY DESIGNATED SAFEGUARDING LEAD	KEY STAGE 5 - REFERRALS & ACTION
	MS HUTCHINSON - ATTENDANCE & WELFARE OFFICER DEPUTY DESIGNATED SAFEGUARDING LEAD	YEAR 7 - 13 EARLY HELP ASSESSMENTS & TAF MEETINGS
CONTACT: 0208 656 9755 / <a href="mailto:safeguarding@shirley.croydon.sch.uk">safeguarding@shirley.croydon.sch.uk</a> / USE CPOMS		

Compassionate

Resilient



# Worried about nude images of you?



Nude image of you online?  
We can help take it down.

# REWARDS & SANCTIONS

Compassionate

Respectful

Creative

Relentless

Aspirational

Resilient



# REWARDS AT SHIRLEY HIGH

## REMEMBER .....

- You get 2 house points by staff for showing the Shirley Values or for being a Shirley Learner . This goes onto your record and goes towards your House total as well.
- Middle Leaders can give 5 House Points and Senior Leaders can give 10 House points at their discretion.

**Congratulations to all who got prizes at the end of the Autumn Term!**  
**The Spring Term Principal's Rewards Assembly will be at the end of this term! Time to demonstrate excellent ABC!**

- Will you be getting a certificate and prize for 100% Attendance, 100% Punctuality, Excellent Behaviour?
- Will you be in the draws for Gift Vouchers or Beats Earbuds?
- Will you get a pizza party?
- Will you be cashing in for a prize on the Rewards Chart?

### SHIRLEY HIGH SCHOOL REWARDS CHART

Students can cash in their points for a reward or rewards of their choice.  
You can cash in early for one of the smaller rewards and then save up again for another or save up over the year to get a larger reward.  
Work hard, collect house points, achieve your ABC and claim your reward!!

	<b>IPAD 2 AIR</b> 600 House Points + 100% attendance + 100% punctuality + 100% behaviour
	<b>BEATS HEADPHONES</b> 400 House Points + 100% attendance + 100% punctuality + 100% behaviour
	<b>£100 GIFT CARD OF CHOICE*</b> 300 House Points + 100% attendance + 100% punctuality + 100% behaviour
	<b>£75 TOWARDS YR 11 / YR 13 PROM OUTFIT</b> 300 House Points + 96% attendance + 97% punctuality + 95% behaviour
	<b>£25 PICK &amp; MIX (GIFT CARD/ LEAVERS HOODIE/ YEAR BOOK/ STATIONERY /BOOK - YOUR CHOICE!)</b> 175 House Points + 96% attendance + 97% punctuality + 95% behaviour
	<b>£20 BOOK VOUCHER</b> 150 House Points + 96% attendance + 97% punctuality + 95% behaviour
	<b>5 ITEMS OF SHS STATIONERY (YOUR CHOICE)</b> 100 House Points + 96% attendance + 97% punctuality + 95% behaviour
	<b>2 QUEUE JUMPS WITH FREE FOOD (ANY MAIN MEAL &amp; DRINK)</b> 50 House Points + 96% attendance + 97% punctuality + 95% behaviour

\* Amazon, JD Sport, iTunes, Nandos, Primark, WH Smith or a combination choice card

**These rewards can be achieved by any one of you ... make it happen!!**



# Zero Tolerance



Compassionate

Respectful

Creative

Relentless

Aspirational

Resilient

# UNIFORM REMINDER



**We have ZERO TOLERANCE for incorrect uniform!**

**Incorrect uniform which can be rectified =  
30 minute uniform detention after school**



**Incorrect uniform which either can't be rectified or there is a refusal to rectify it =  
isolation from lessons and 30 minute uniform detention after school**

# MOBILE PHONE REMINDER



**Our school rules state that mobile phones are not permitted in our school.  
This rule has not changed!**



**!If you are found with a phone in your possession and you hand it over, you will get an amber 30 minute detention and your phone will be confiscated but returned at the end of the day**

**If you are found with a phone in your possession and you refuse to hand it over it will be referred to senior staff. You will receive a more serious sanction and still have your phone confiscated with the return to your parent only.**

Compassionate

Respectful

Creative

Relentless

Aspirational

Resilient



# Behaviour Reminders

Isolation (unrectified uniform, on call, pending investigation into an incident)  
J01 has been refurbished. There are 25 exam desks and the SLT, will be running Isolation.

## Seclusion (internal Suspension)

J02 (Mrs Hylton's old classroom). There are 24 booths and 6 of these booths will have computers. Seclusion will be run by Mr Somo, Seclusion Manager and the SLT.

## Uniform

If a student arrives to school in the morning in incorrect uniform (this includes, hair colour / style, false eyelashes, long false nails, jewellery etc.) and is unable to rectify they are to be sent to J01 (isolation). They will remain in there for the day and will be given a 30 minute uniform detention, to be served after school.

If the issue can be rectified; i.e. they remove the false eyelashes, nail polish, jewellery or they are able to borrow a tie, plimsolls or a blazer etc., they will be allowed back in lessons, but will be given a 30 minute uniform detention to be served after school.

# Behaviour Reminders

## Behaviour Points

Green level incident = -1; Amber level incident = -2; Red level incident = -3; R&R or Seclusion = -5; Suspension = -10

## Reflection and Restorative Conversations

Students are expected to reflect on their behaviour following a sanction and understand where they went wrong and what they would do differently next time.

Teachers will also have restorative conversations with students about the offence leading to a sanction.

# Behaviour Reminders - Detentions

- Detentions are given for green level incidents; amber level incidents; red level incidents; lateness to school; not completing Bedrock; not completing 3 homeworks over two weeks.
- The majority of detentions will usually be served on the day of the offence. They can be set at break, lunch or after school depending on the offence.
- HoY poor punctuality detentions (3 lates in a week) and HoY missed Bedrock detentions are on Fridays after school; SLT missed homework (3 over 2 weeks) detentions are on Mondays, Wednesdays and Fridays.
- SLT Saturday detentions are given for 10+ behaviour points (2 hours); 15+ behaviour points (3 hours); 4 lates in a week (2 hours); 5 lates in a week (3 hours); truancy.
- If a student fails to attend a set detention it will be reset for the following day and they will be collected to serve it in the Main Hall.
- If this reset detention is missed the student will be set an R&R (Respite & Reflection) the following day from 9.00am - 4.00pm and the missed detention will be served straight after this.
- If a student misses a Saturday detention the student will be set an R&R (Respite & Reflection) and the Saturday detention will be reset for the next Saturday.

**LOCAL COMMUNITY MATTERS**

**What the local community see and hear informs their impression of our school.**



- Be respectful of the environment
- Be respectful of property
- Be aware of how you present yourself to the local community = not walking in the road, leaning up against parked cars, shouting at one another
- Be aware of the local primary school = young students and parents.





# Late to lesson



**Any student who arrives late to their lesson will be issued with a thirty minute detention after school in the hall.**

**(All families were given this information last week in the form of a letter, text and announcement on ClassCharts.)**



**STUDENTS ARE ONLY ALLOWED TO EAT IN THE CANTEEN, HALL, FRONT PLAYGROUND & RUSSELL SQUARE. STUDENTS CAUGHT EATING OUTSIDE OF THESE AREAS WILL BE SANCTIONED WITH A 60 MINUTE DETENTION.**

**THERE ARE NO LONGER DESIGNATED AREAS FOR BREAK AND LUNCH (EXCEPT YEAR 11) - SEE BELOW:**

<b>RUSSELL SQUARE</b>	<b>DESIGNATED QUIET AREA AND EATING AREA FOR ANY YEAR GROUP</b>
<b>FRONT PLAYGROUND</b>	<b>ANY YEAR GROUP</b>
<b>LHS NETBALL COURTS</b>	<b><u>YEAR 11 STUDENTS ONLY</u></b>
<b>RHS NETBALL COURTS</b>	<b>ANY YEAR GROUP</b>
<b>FIELD (CURRENTLY CLOSED)</b>	<b>ANY YEAR GROUP</b>
<b>D25/26</b>	<b>ANY YEAR GAMES CLUB</b>

# SHS GOLDEN RULE

- Students are reminded that we are a multi cultural, multi faith, ethnically diverse community where we observe our Golden Rule of 'Respect for all' as well as the British Values of 'Tolerance' and 'Respect'
- We expect that members of our community may hold different views or opinions but we will not tolerate any prejudice related behaviour and any student found in this position can expect to be sanctioned in line with our behaviour policy.

♡♡♡  
BE KIND  
to one  
ANOTHER



We expect all students to follow our GOLDEN RULE:

Shirley High School students are expected to show consideration and respect to all members of the school and local community at all times.

So that we have a Safe, Happy and Successful school





# Behaviour Expectations; Riding To School

**All students who wish to cycle to school must see Mrs Dye for a bike permit. Students who are not in possession of a bike permit will not be allowed to ride to school. In addition, students who ride to school without a helmet will have their bike permit revoked.**



Compassionate

Respectful

Creative

Relentless

Aspirational

Resilient

# **RESOURCES & INFORMATION TO HELP WITH YOUR LEARNING**

**Compassionate**

**Respectful**

**Creative**

**Relentless**

**Aspirational**

**Resilient**



# WHAT'S ON THIS WEEK & COMING UP...

Compassionate

Respectful

Creative

Relentless

Aspirational

Resilient



# WHAT'S ON THIS WEEK ...

**MONDAY 19th February**

**TUESDAY 20th February**

**WEDNESDAY 21st February**

**THURSDAY 22nd February**

**FRIDAY 23rd February**

**No assembly (Year 11 PPEs)**

**Year 7 assembly**

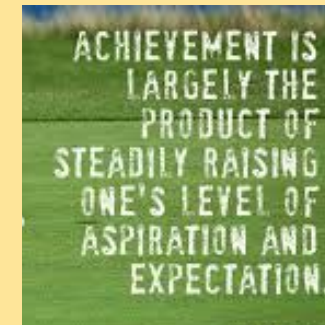
**Year 10 assembly**

**Year 8 assembly**

**Year 9 assembly**

**THEME FOR THE WEEK - Internet Safety Week**

**BRITISH & SHIRLEY VALUES = Rule of Law, Respect, Individual Liberty**





19th February

# Word of the Week

## ASSUAGE

[uh-sweyj]  
(verb)

**Synonyms:** appease,  
satisfy, mitigate, relieve,  
ease.

- as·suage·ment, **noun**
- as·suag·er, **noun**
- un·as·suag·ing, **adjective**

1. Make (an unpleasant feeling) less intense; to make milder or less severe.

"To assuage her guilt, she did all she could to help."

"Those last few drops of water did little to assuage his thirst."

Compassionate

Respectful

Creative

Relentless

Aspirational

Resilient

# Etymology

## ASSUAGE

[uh-sweyj]

(verb)

### Origin

LATIN

ad-  
to

OLD FRENCH

assouagier  
asouagier

assuage

*Middle English*

LATIN

suavis  
sweet

Middle English: from Old French assouagier, asouagier, based on Latin ad- 'to' (expressing change) + suavis 'sweet'.

Compassionate

Respectful

Creative

Relentless

Aspirational

Resilient



# USAGE

# ASSUAGE

[uh-sweyj]  
(verb)

Use over time for: assuage



Compassionate

Respectful

Creative

Relentless

Aspirational

Resilient

# Welcome to Bedrock Learning



Ensure you have completed a minimum **2 Bedrock lessons (vocabulary and/or grammar)** by the end of the day **Monday 26th February 2024.**



## Bedrock Homework Support

**When:** lunchtime and after school  
**Location:** Library



# Bedrock Procedure Reminder

- Bedrock homework week runs from **Tuesday to Monday - you must complete your homework by Monday each week.**
- If your homework is not completed each week, you will be issued with a **Bedrock Homework Detention.**
- This **detention takes place on Fridays** after school with your HoY.
- If you have any **issues with completing your homework, speak to your tutor in the first instance and before the homework deadline.**

WORLD  
**BOOK  
DAY**

7 MARCH 2024



**Save the date!**  
**World Book Day**  
**7 March 2024**



**World Book Day Celebration**

**Get your book character costumes  
ready!**



# Scholarship:



A reminder that all scholarship students have regular meetings on Mondays at 10:40 in F04. Failure to attend could jeopardise your position in scholarship.

Compassionate

Respectful

Creative

Relentless

Aspirational

Resilient

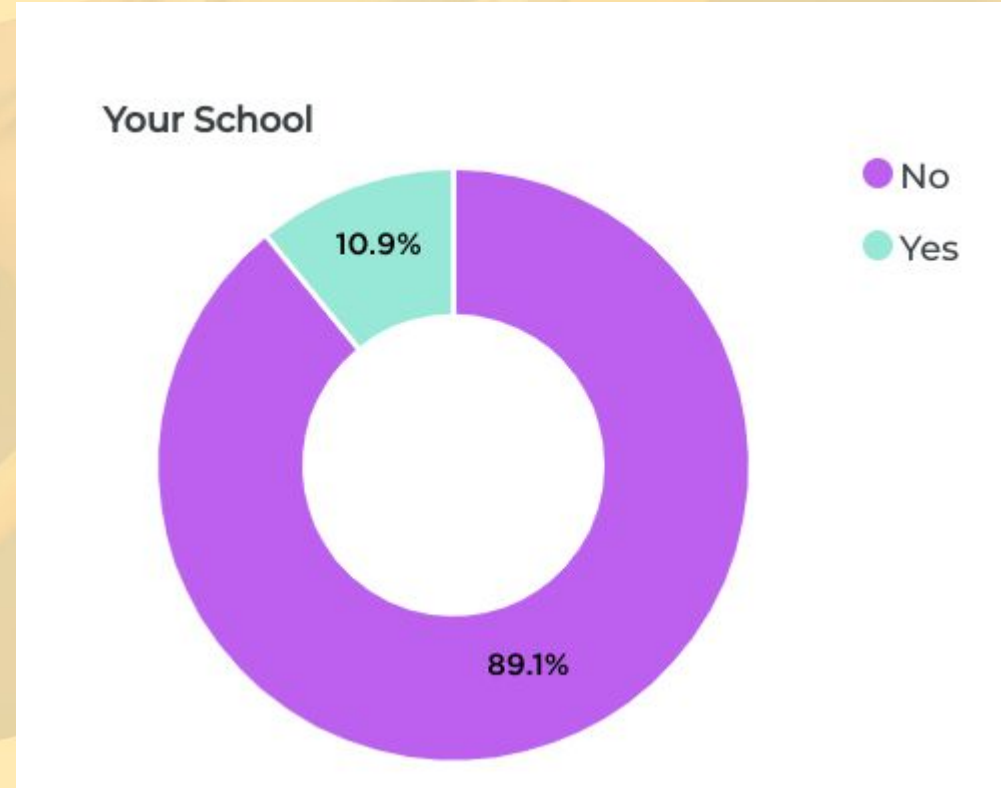
# Votes for Schools - Results from last time!

Last week you were asked...

*Are adults equipped to teach you about the online world?*

**SHS results are in...**

Disagree? Make sure your form has their say next week!





# ATTENDANCE & PUNCTUALITY TO DATE (SEPTEMBER 2023 - 19.02.24)

	Attendance %	Punctuality %
Whole School	90.0	3.6
7	90.5	1.7
8	89.2	2.4
9	88.8	4.9
10	89.7	3.3
11	90.0	5.9
12	93.7	2.4
13	90.7	2.3



# ATTENDANCE & PUNCTUALITY



**SCHOOL ATTENDANCE TARGET FOR ALL = 96%**

Students are to attend every day. If you are not here you will miss stuff. If you miss stuff you will not have everything you need to achieve your targets and improve your personal development.

**SCHOOL PUNCTUALITY TARGET FOR ALL = 97%**

Students must be on time to school every day. If you are late you will miss stuff. If you miss stuff you will not have everything you need to achieve your targets and improve your personal development.

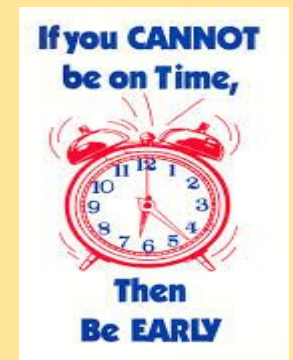
## **Remember:**

**Every late to school = 30 minute Senior Leader Detention on the day**

**3 lates in a week = 60 minutes HoY Detention on a Friday**

**4 lates in a week = 2 hours SLT Detention on a Saturday**

**5 lates in a week (late every day!) = 3 hours SLT Detention on a Saturday**



**ALL STUDENTS SHOULD ENSURE THEY ARE MARKED IN FOR ALL LESSONS, ANY STUDENT WHO DOES NOT HAVE AN AM REGISTRATION MARK WILL BE SANCTIONED WITH A 30 MINUTE LUNCHTIME DETENTION.**



# **EXTRA-CURRICULAR CLUBS & ACTIVITIES AT SHS**

**Compassionate**

**Respectful**

**Creative**

**Relentless**

**Aspirational**

**Resilient**



## Why go to an extracurricular club?

- Learn Something New
- Self Development
- Well Being/ Stress Relief
- Gain House Points
- Complete Something Without a Grade
- Make New Friends
- Feel a Sense of Achievement
- New Opportunity
- Great for your CV/ Job application



# DT HOUSE COMPETITION

Design or create an Easter Egg Design  
inspired or based on the movie "Wonka."

Entries must be A4 size

1st Place Prize - £15 voucher & Large Easter Egg;

2nd Place Prize £10 voucher & Easter Egg;

3rd Place Prize - £5 voucher & Mini Eggs.

Designs can be emailed to Mrs Khera at  
[khera@shirley.croydon.sch.uk](mailto:khera@shirley.croydon.sch.uk)

Good Luck!!!

All entries must be emailed or delivered  
to G07 no later than Monday 4th March  
by 4.00pm

**DESIGN & TECHNOLOGY**  
**at Shirley High School**



**Extra-Curricular Clubs 2023-2024**

Activity	Year Group(s)	Day	Time	Venue	Staff	Additional Information
Art Club Drop In	7-13	Everyday	12.40-1.15	G22	JD	Opportunity for pupils to complete homework, access equipment or work on individual projects.
Art Club Drop In	7-13	Everyday	3.05-4.30	G23	MB	Opportunity for pupils to complete homework, access equipment or work on individual projects.
Photography Club Drop In	10-13	Everyday	12.40-1.15	G21	HB	Opportunity for pupils to complete homework, access equipment or work on individual projects.
Year 9 Art Club	9	Thursday	3.30-4.30	G23	MB	Designed to give Year 9 pupils an opportunity to work on advanced skills required to be a successful Art or Photography GCSE pupil. Also the club will give pupils a taste of what Art and Photography GCSE is all about.
Reading Club	7-13	Wednesday	3.30-4.30	LRC	SD	Everyone is welcome.
Dance Club	WA 7&8 WB 9	Monday	3.30-4.30	Dance Studio	SF	Pupils will learn different styles of dance and develop their technique and confidence. Pupils will also have the opportunity to learn how to choreograph dances.
SEND HW Club	7-11	Everyday	3.30-4.40	D26	CP/TC/RDG	Helping SEND pupils and any pupils wanting support to complete homework.
SEND Lunchtime HW Club	7-11	Everyday	12.40-1.25	D26	CP/CW	Helping SEND pupils and any pupils wanting support to complete homework.
Textiles Club	7-13	Wednesday	3.20-4.20	GO6/ GO7	TK	Learning to develop different types of textiles skills by exploring and working in different mediums
Games Club	7-11	Everyday	12.40-1.25	D25	CP/ EOR	Any pupil wanting time away from the playground and wishing to play a board game, draw, read etc.
Dance Elite	Selected Y7-13s	Wednesday	3.30-4.30	Dance Studio	TL	Auditions to be held for the school's Elette Dance Troop.
Drama Club	7-9	Monday	3.30-4.30	D35	AS	Y7-9 Developing confidence through the art of Drama.

Compassionate

Respectful

Creative

Relentless

Aspirational

Resilient





## SHIRLEY HIGH SCHOOL PERFORMING ARTS COLLEGE

### Our Vision:

To develop aspirational learners who strive for excellence academically, creatively and culturally, benefitting from a wide range of opportunities led by inspirational educators.

Christian Union	7-13	Thursday	12.50-1.20	G Block	RD	All welcome.
School Band	7-13	Thursday	12.40-1.25	Grohl, PA	ST	Open to all musicians.
Choir	7-13	Friday	12.40-1.25	FO4	ST	Open to all year groups.
Making Club	7 - 13	Monday	3.20-4.20	G07	TK/IW	Making Club - Models, crafting - not project related.
Gardening	7 - 9	Monday	3.30-4.30	School Garden	JDI/SF	Help with life skills, mental wellbeing and dexterity skills.
Chess Club	7 - 13	Wednesday	3:20-4:30	B01	AK	All abilities and experience levels welcome!
STEM Club	7-9	Wednesday	3.30-4.30	D13	JSH	Pupils have the opportunity to participate in fun STEM based.
Beats/Tech Club	KS3	Tuesday- Thursday	12.40-1.20	FO3	PRS	Learn a different side to the Performing Arts.
Keyboard Club	KS3	Monday	12.40-1.20	FO3	PRS	Improve keyboard skills.
Table Tennis	7-13	Every Lunchtime	12.40-1.20	Gym	ZM/PD/DN	
Basketball Breakfast Club	7-13	Every Morning	7.30-8.20	Sports Hall	Coach Samuel	
Basketball Lunchtime Club	7-13	Mon, Wed, Thu	12.40-1.20	Sports Hall	Coach Samuel	
Basketball Afterschool Club	KS4 Boys	Monday	3.20-4.20	Sports Hall	Coach Samuel	
Basketball Afterschool Club	Girls	Tuesday	3.20-4.20	Sports Hall	Coach Samuel	
Basketball Afterschool Club	KS3 Boys	Thursday	3.20-4.30	Sports Hall	Coach Samuel	
Basketball Afterschool Club	Mixed Group	Friday	3.20-4.20	Sports Hall	Coach Samuel	

Compassionate

Respectful

Creative

Relentless

Aspirational

Resilient



## SHIRLEY HIGH SCHOOL PERFORMING ARTS COLLEGE

*Our Vision:*

*To develop aspirational learners who strive for excellence academically, creatively and culturally, benefitting from a wide range of opportunities led by inspirational educators.*

Weights and Fitness Lunchtime	10/11 Boys	Mon, Wed, Fri	12.40-1.20	Fitness Suite	PE Staff	
Weights and Fitness Lunchtime	10/11 Girls	Tue, Thur	12.40-1.20	Fitness Suite	PE Staff	
Weights and Fitness Afterschool	10/11 Girls	Mon, Wed, Fri	3.05-4.20	Fitness Suite	PE Staff	
Weights and Fitness Afterschool	10/11 Boys	Tue, Thur	3.05-4.20	Fitness Suite	PE Staff	
Football Afterschool Training	7/8 Boys	Monday	3.20-4.15	Field	PD/DN	
Football Afterschool Training	7/8 Girls	Thursday	3.20-4.15	Field	PD	
Football Afterschool Training	8/9	Friday	3.20-4.15	Field	PD	
Futsal Lunchtime Club	7/8	Monday	12.40-1.20	Sports Hall	PD	
Futsal Lunchtime Club	9	Friday	12.40-1.20	Sports Hall	MH	
Netball	7-11 Girls	Monday	3.20-4.15	Netball Courts	ZM/MH	
Boxing Club	7-13	Tuesday	3.20-4.20	Gym	Coach Sobers	
Trampoline Club	7-13	Wednesday	3.20-4.20	Gym	DN	
Rugby Club	Boys	Wednesday	3.20-4.20	Field	ZM	
Rugby Club	Girls	Friday	3.20-4.20	Field	ZM	

Compassionate

Respectful

Creative

Relentless

Aspirational

Resilient



# CHRISTIAN UNION



Thursdays @  
12.55pm  
Room **H02**

**Come along to: Make new friends while you explore the Christian faith, study the Bible, play Bible games and ask questions about God.**

See Mrs Hylton in D06, Mrs Dean in D32, Miss Frimpong H01, Mrs Dusha G22 or Ms Deguin







# What is STEM club?

- As part of STEM club, you can:
- Participate in exciting experiments and activities
- Try Science, Gardening, D&T projects tailored to your interests
- Make friends in different year groups
- Participate in trips, workshops and masterclasses
- Learn about careers in STEM

# Performing Arts Centre

**Please note:** at break, lunch and after school the Performing Arts Centre is used for rehearsals, clubs and 1-1 lessons. Only students booked in at the PA office for one of the above are allowed in the building.  
Many thanks for your understanding.



Compassionate

Respectful

Creative

Relentless

Aspirational

Resilient



# Book Club

## Everyone welcome

Wednesday -After School in  
the LRC  
Please see Mrs Dye to sign up.

Compassionate

Respectful

Creative

Relentless

Aspirational

Resilient



**D26**

# HOMework CLUB

ALL YEARS WELCOME

**WHERE:**

**D26**

**WHEN:**

**EVERY DAY LUNCHTIME - 12.40-1.25PM**

**EVERY DAY AFTER SCHOOL - 3.20-4.30PM**

**USE YOUR TIME WISELY -DO YOUR HOMEWORK BEFORE YOU GO HOME  
- COME ONCE A WEEK, TWICE A WEEK, EVERY DAY - IT'S UP TO YOU!!**



**D26**

**D25**

# GAMES CLUB

**WHERE:**

**D25**

**WHEN:**

**EVERY LUNCHTIME 12.40-1.20PM**

**NO COMPUTERS!**

**ALL YEARS WELCOME!**



**D25**

# **NETBALL CLUB**

**Mondays & Wednesdays**

**After school: 3:20-4:30pm**

**Rewards given for commitment & MVP/MIP**



ALL YEAR GROUPS



	Morning 7:30-8:15 am	Lunchtime 12.40 – 1.15pm	After School 3.20-4.15pm
MONDAY	Basketball- Greenhouse	Basketball- Greenhouse  Weights & Fitness Boys  Table tennis girls and boys all years- Mr Dyer	Football BOYS Y7&8 Mr Dyer  Netball club Y7-8 -Miss McConnell Netball club Y9-10 -Miss Hayden  KS4 BOYS Greenhouse basketball  Weights & Fitness Girls
TUESDAY	Basketball- Greenhouse	Futsal masterclass Y7&8 - Mr Dyer  Weights & Fitness Girls  Table tennis girls and boys all years - Mr Noirette	Boxing club- Coach Sobers All years  GIRLS Greenhouse basketball  Weights & Fitness Boys
WEDNESDAY	Basketball- Greenhouse	Basketball- Greenhouse  Weights & Fitness Boys  Table tennis girls and boys all years- Miss McConnell	BOYS rugby- Miss McConnell  Trampolining- Mr Noirette  Weights & Fitness Girls
THURSDAY	Basketball- Greenhouse	Basketball- Greenhouse  Weights & Fitness Girls  Table tennis girls and boys all years - Mr Dyer	KS3 Girls football- Mr Dyer  KS3 BOYS Basketball Greenhouse  Weights & Fitness Boys
FRIDAY	Basketball- Greenhouse	Year 9 Futsal- Miss Hayden  Weights & Fitness Boys  Table tennis girls and boys all years - Miss McConnell	GIRLS rugby- Miss McConnell  Football BOYS Y8&9- Mr Dyer  MIXED Basketball Greenhouse  Weights and fitness Girls

# PE CLUBS TIMETABLE

**Before school/lunchtime  
clubs- Trainers required**

**After school/weights  
and fitness- Full PE kit  
required**





# **Making Club**

**Starting Every Monday After School from 3.20 to 4.30pm in G07**

**Open to 20 pupils from Years 7 -13**

**For more information please see Mrs Khera or email [khera@shirley.croydon.sch.uk](mailto:khera@shirley.croydon.sch.uk)**



**Back by Popular Demand**

After school  
3.20 – 4.30pm

Learn new fun skills

No experience necessary

Work on project to take home

Open to the first 20 pupils  
in G07

All equipment and  
materials provided

Email Mrs Khera on  
[khera@shirley.croydon.sch.uk](mailto:khera@shirley.croydon.sch.uk)

**MRS KHERA'S**

# **Years 7 -13 TEXTILES CLUB**

**Every Thursdays**



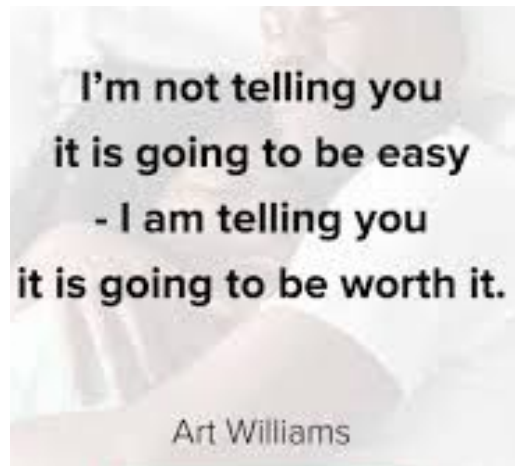
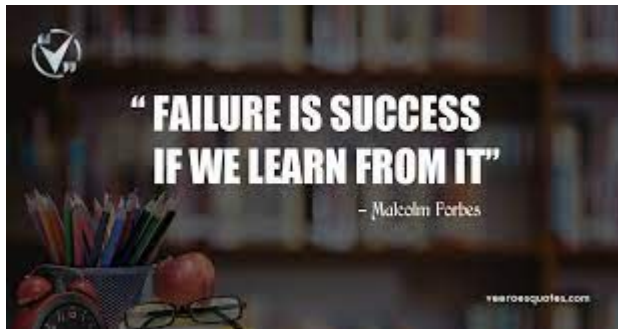
**EDUCATION  
IS THE PASSPORT  
TO THE FUTURE,  
FOR TOMORROW BELONGS  
TO THOSE WHO  
PREPARE FOR IT  
TODAY.**

The  
**expert** in  
anything  
was  
once a  
**beginner.**



**TRY  
A LITTLE  
HARDER TO  
BE A LITTLE  
BETTER**

"Do all the good you can,  
By all the means you can,  
In all the ways you can,  
In all the places you can,  
At all the times you can,  
To all the people you can,  
As long as ever you can."



# Striving for Excellence



Compassionate

Respectful

Creative

Relentless

Aspirational

Resilient